



# SVK FIBRE CEMENT ROOF AND FACADE SLATES

**Superior quality for your roof and facade**



# CONTENT

## SVK slates, the reference for your home

The roof and facade slates from SVK give every building their own 'feel'. Besides adding character, they also offer protection against all weather conditions.

Are you looking for an aesthetically pleasing roof or facade covering that also offers a high degree of comfort? Choose a durable finish with slates from the SVK range.

**ARDONIT** is SVK's range of slates with square cut edges. The wide range of roofing methods allows you to give your building a classic or modern character.

**MONTANA** combines the looks of natural slate with the advantages of fibre cement. Thanks to dressed edges and a beautifully textured or smooth surface, Montana slates give an authentic look to the appearance of roofs and facades.

Thanks to the wide range of colours (almost all RAL and NCS colours are possible from 100m<sup>2</sup>)

**FASONIT** slates can offer unique, visual added value to all styles of architecture. These slates are available in both a smooth and textured version, with or without five holes.

Are you dreaming of a designer villa, a 'cottage' style home or a rural idyll? One thing is sure: with quality slates from SVK, your project is guaranteed to have the perfect finish you're looking for.

04

Why choose slates of SVK

06

Ardonit

08

Montana

10

Characteristics

14

Our values

# WHY CHOOSE SLATES OF SVK

## The best raw materials for the strongest slate

SVK slates contain specially selected, top quality fibres. The average breaking point for SVK slates is somewhat higher than the requirements of the European EN 492 standard; this immediately demonstrates the high durability of SVK slates. CE marking and BENOR are certificates that demonstrate the top quality of Ardonit, Montana and Fasonit slates.

## Moss-resistant top layer

On the visible front and sides of every slate, a double-colour coating is applied, based on environmentally-friendly, water-borne acrylic resin. One coloured layer is applied to the back and this is then followed with a colourless resin layer that resists water absorption. The specific moss-resistant elements in our paint inhibit the formation of moss.



## Endless colour options

Almost all RAL and NCS colours are available, providing endless creative options.

## Perfect dimensional stability

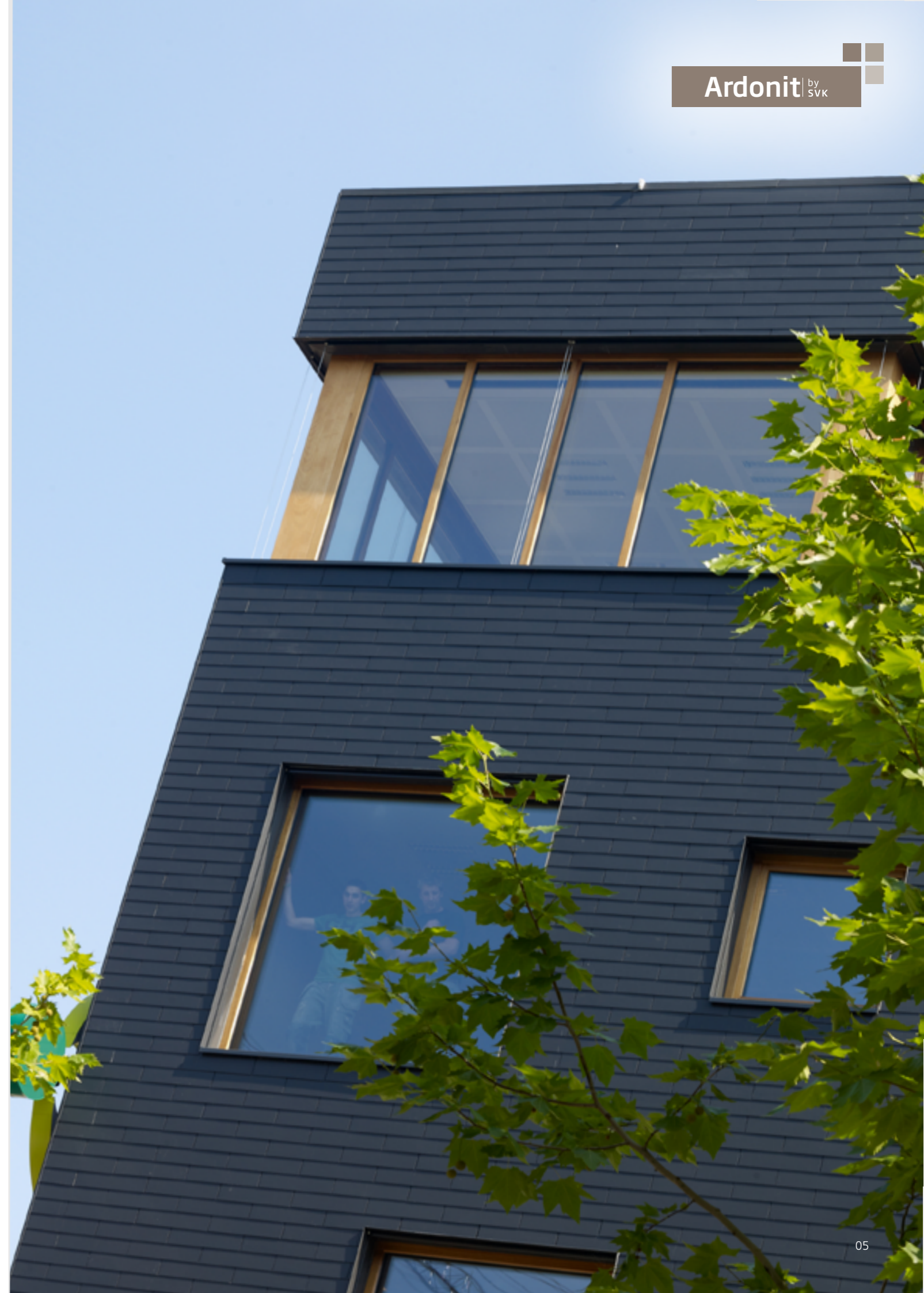
Fibre cement slates, in contrast to natural slates, are dimensionally stable in length, width and thickness. They do not require any prior sorting by thickness and can be positioned immediately. For fitters, this saves a lot of time and therefore costs.

## Low weight

Fibre cement slates are light, making them easier to handle.

## Simple, workable, low-breakage

Pyrites and microscopic tears often occur in natural slates and can lead to breakages. Ardonit, Montana and Fasonit fibre cement slates do not suffer from these problems. They are easy to use and do not break easily.

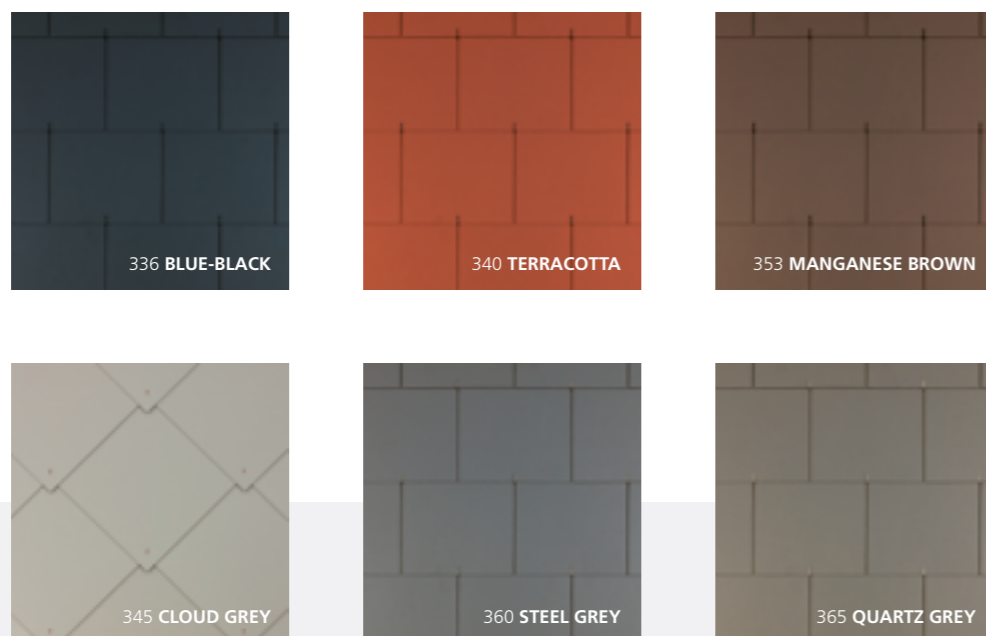


# ARDONIT

Looking for a slate that combines a range of creative options with durability? Thanks to their square cut edges and unique finish, Ardonit fibre cement slates are your best choice.

## A range of trendy colours

Ardonit slates have a smooth or textured surface with square cut edges and are available in many colours and sizes.



## PRODUCT RANGES SLATES ARDONIT

Shape	Finish	Dimensions (cm)	Colours
	<ul style="list-style-type: none"> <li>Smooth surface</li> <li>Square cut edges</li> </ul>	3 predrilled holes for facade	60 x 30 x 5 336 BLUE-BLACK, 150 NATURAL GREY
		3 predrilled holes for roof	60 x 30 x 9 336 BLUE-BLACK
	<ul style="list-style-type: none"> <li>Smooth surface</li> <li>Square cut edges</li> </ul>	Without predrilled holes	60 x 40, 45 x 30, 40 x 20, 60 x 32 336 BLUE-BLACK
			60 x 30 336 BLUE-BLACK, 360 STEEL GREY, 365 QUARTZ GREY
			40 x 27, 40 x 24 336 BLUE-BLACK, 353 MANGANESE BROWN *, 340 TERRACOTTA **
			45 x 30 * 336 BLUE-BLACK
	<ul style="list-style-type: none"> <li>Smooth surface</li> <li>Square cut edges</li> <li>2 cut corners</li> </ul>	Without predrilled holes	60 x 30 336 BLUE-BLACK, 353 MANGANESE BROWN *, 340 TERRACOTTA **
			40 x 40 x 5 336 BLUE-BLACK, 353 MANGANESE BROWN *, 340 TERRACOTTA **, 345 CLOUD GREY *, 150 NATURAL GREY
	<ul style="list-style-type: none"> <li>Smooth surface</li> <li>Square cut edges</li> </ul>	Without predrilled holes	40 x 40 x 10 336 BLUE-BLACK, 150 NATURAL GREY
			60 x 32 336 BLUE-BLACK
	<ul style="list-style-type: none"> <li>Textured surface</li> <li>60/32: horizontal</li> <li>40/20: vertical</li> <li>Square cut edges</li> </ul>	Without predrilled holes	40 x 20 336 BLUE-BLACK

\* Til end of stock  
\*\* On demand

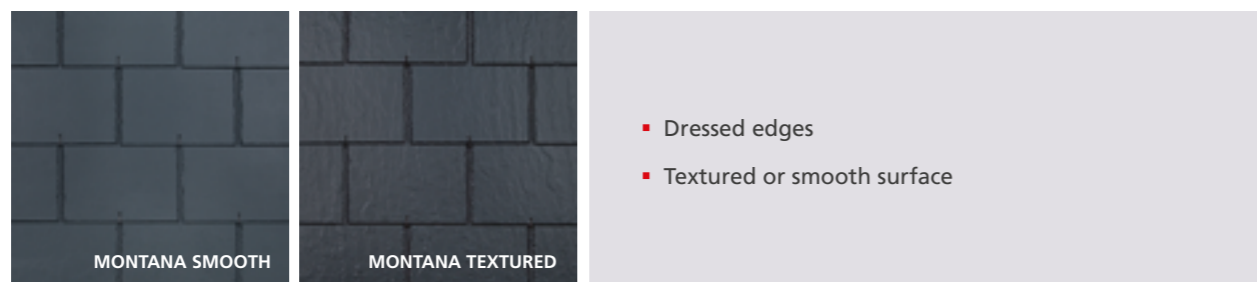
# MONTANA

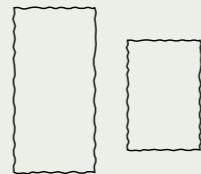
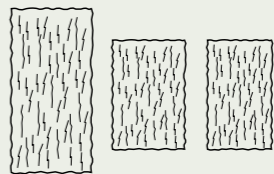


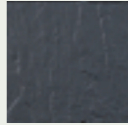
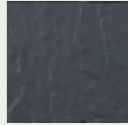
## PRODUCT RANGES SLATES MONTANA



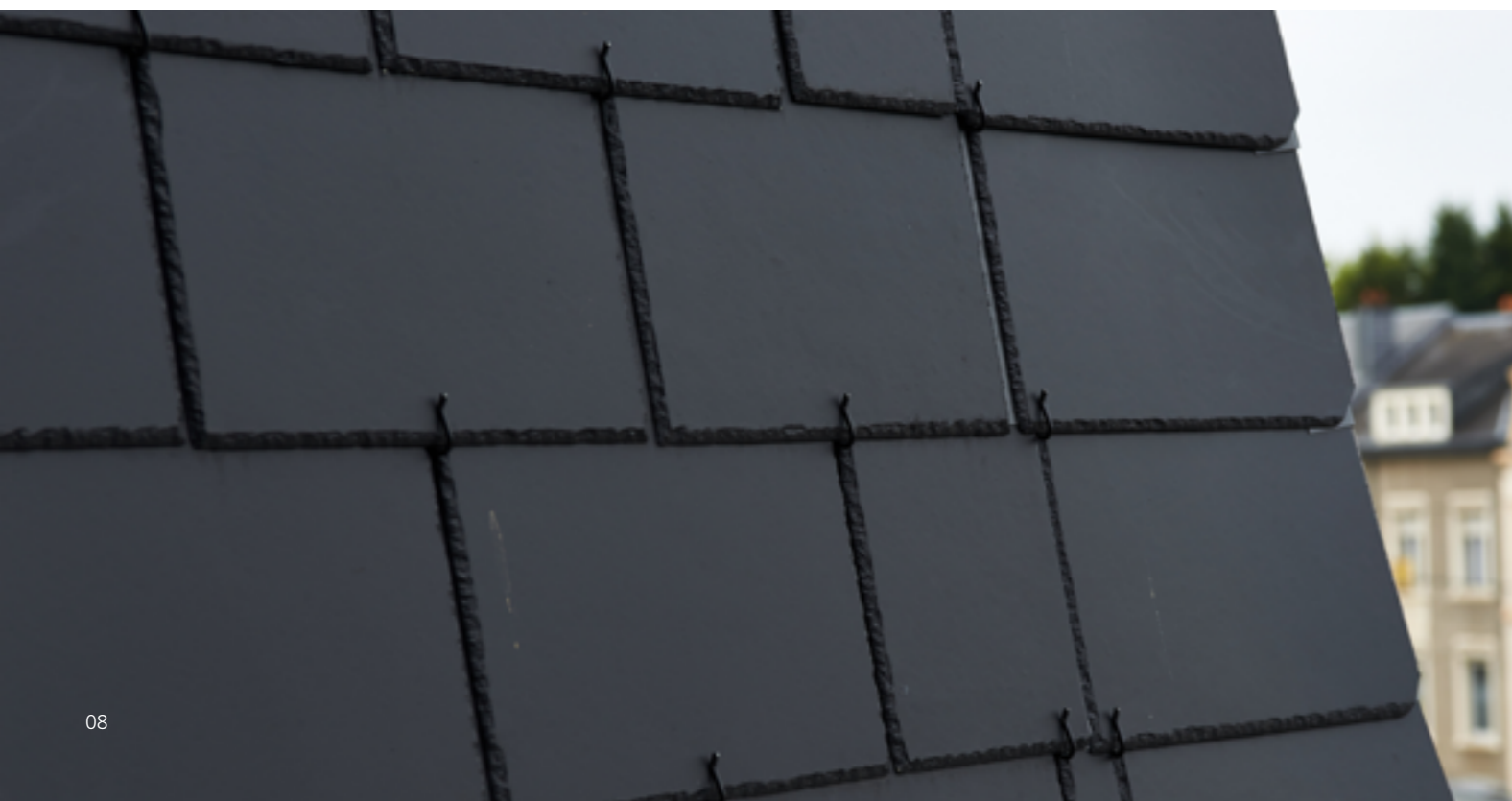
### All the advantages of natural slate without the disadvantages.

Lovers of natural slate will adore the Montana. This blue-grey slate has naturally ridged edges, and a textured or smooth surface. The various formats make it possible to create a more rural or rustic feel. In addition, Montana slates have the looks of natural slate, but offer the advantages of fibre cement.



	MONTANA SMOOTH	MONTANA TEXTURED	
Shape			
Finish	<ul style="list-style-type: none"> <li>▪ Smooth surface</li> <li>▪ Dressed edges</li> <li>▪ Without predrilled holes</li> </ul>	<ul style="list-style-type: none"> <li>▪ Textured surface</li> <li>▪ Dressed edges</li> <li>▪ Without predrilled holes</li> </ul>	
Dimensions (cm)	60 x 30 45 x 30 40 x 27	60 x 30 45 x 30 40 x 27 40 x 24	45 x 30 *
Colours	336 BLUE-BLACK 	336 BLUE-BLACK 	336 BLUE-BLACK 

\* Til end of stock  
\*\* On demand



## The perfect look and finishing for your facade.

Fasonit is a slate for both roof and facade, made of double-pressed fibre cement. They measure 60 by 30 cm. Fasonit slates are available in a smooth or textured version, with or without five holes and in two standard colours (from 100m<sup>2</sup> almost all RAL and NCS colours are available). Whether new-build or renovation, Fasonit gives every building construction visible added value.



Almost all RAL and NCS colours are available from 100m<sup>2</sup>

### Standard colours



Shape	
Finish	<ul style="list-style-type: none"> <li>▪ Textured or smooth surface</li> <li>▪ Without or with 5 predrilled holes</li> </ul>
Dimensions (cm)	60 x 30
Colours	<div style="display: flex; justify-content: space-around;"> <div style="text-align: center;"> <p>12 CREAM</p> </div> <div style="text-align: center;"> <p>13 SNOW WHITE</p> </div> </div>





## CHARACTERISTICS

ARDONIT, MONTANA, FASONIT

### Dimensions

Length	200 - 600 mm
Width	200 - 600 mm
Thickness	4 mm

### Mechanical characteristics

<b>Bending moment</b>	
h ≤ 350 mm	30 Nm/m
350 < h ≤ 450 mm	40 Nm/m
450 < h ≤ 600 mm	45 Nm/m
Elasticity modulus (wet)	ca. 16.000 N/mm <sup>2</sup>

### Physical characteristics

Density (oven-dry)	$\rho \geq 1.700 \text{ kg/m}^3$
Weight (at moisture content: 12%)	8 kg/m <sup>2</sup>
Coëfficiënt of heat conductivity	$\lambda 0,72 \text{ W/mK}$
Paint adhesion <i>According ISO 2409</i>	Classe 0
Water uptake (coated slates)	< 4% (weight)
Reaction to fire (coated slates) <i>In accordance with EN 13501-1</i>	Classe A2-s1, d0

# OUR VALUES

## Sustainable and environmentally-friendly solutions

The coatings are always waterborne and manufactured in-house to ensure the highest quality. They will not involve any aggressive solvents which can only be good news for the environment.

## Fast, flexible service

SVK always have a large stock and handles all your orders fluently. Prompt customer service is our focus.

## SVK, well established for over 110 years

For More than a century SVK has produced construction materials of the highest quality. Benefit from our experience!

Follow us!





SVK nv  
Aerschotstraat 114, B-9100 Sint-Niklaas  
T +32 3 760 49 00  
F +32 3 777 47 84  
info@svk.be ■ www.svk.be

