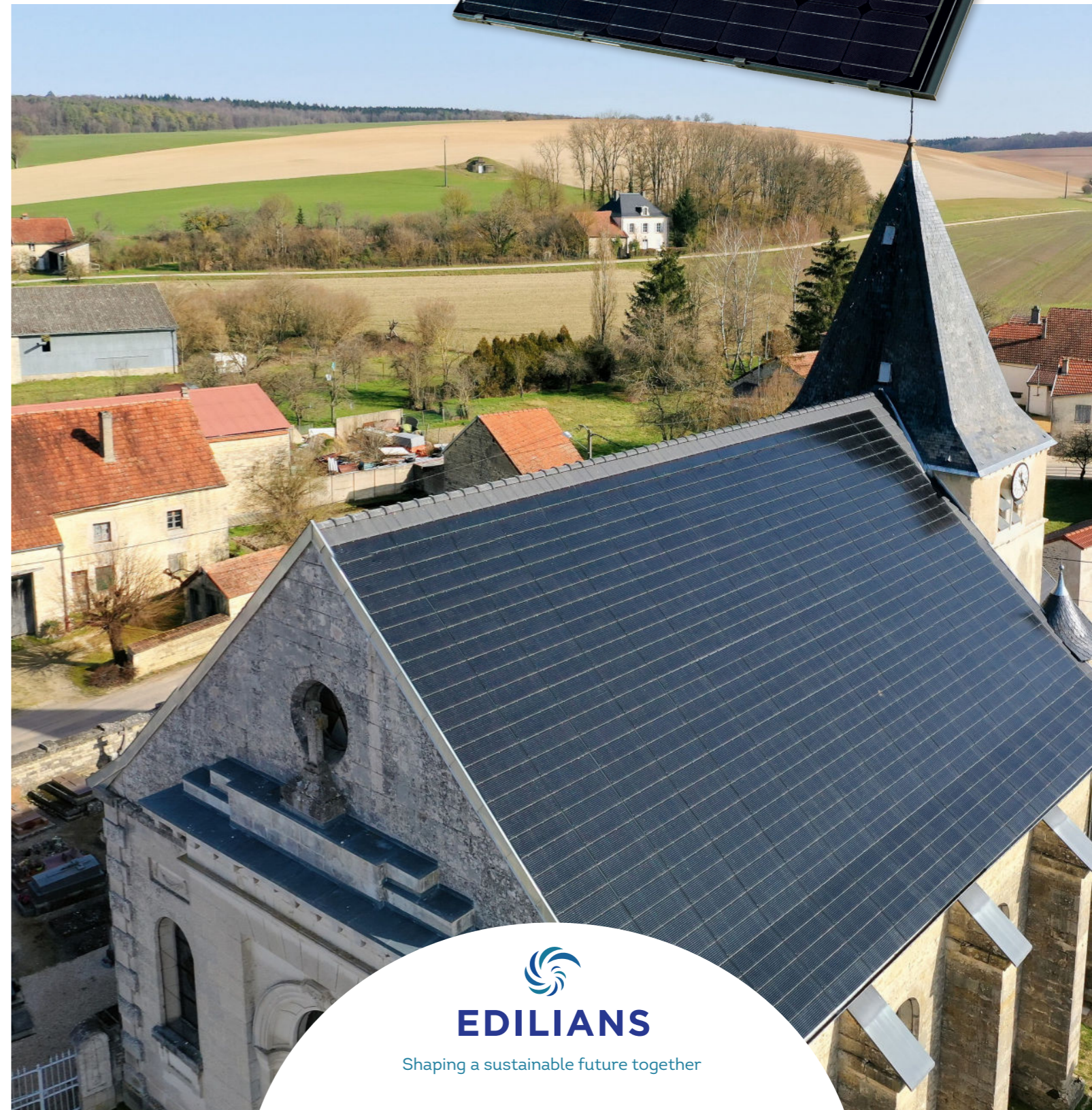
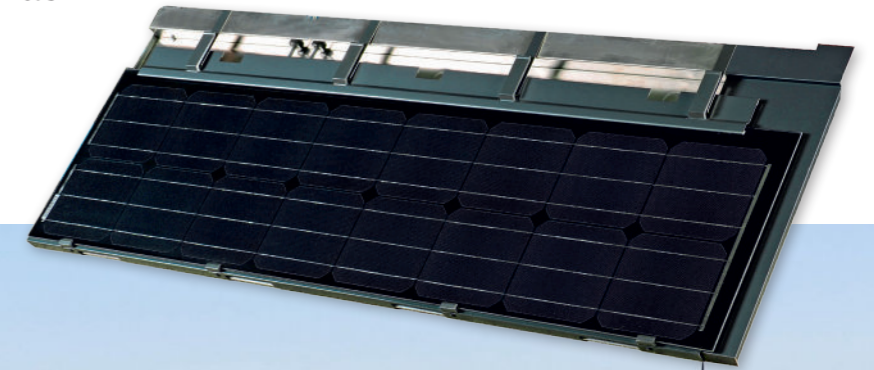




SOLAR MAX TILE

FOR BOTH NEW ROOFING AND RENOVATION

Universal solar tile that blends perfectly with all roofings



Compatibility

The SOLAR MAX TILE is compatible with clay tiles and concrete tiles of all models and all manufacturers. With an appropriate frame, our SOLAR MAX TILE fits perfectly and blends with the appearance of the roofing.

EDILIANS ROOF TILES
Industrial site
3 Impasse de Chavanne
ZAC de Chavanne
69400 ARNAS
serviceclients.exp@edilians.com

This documentation supersedes all previous versions. This document is not contractual and may be changed at any time (see current product data sheets on our Web site www.edilians.com). The photographs present suggestions and are not contractual. Edilians S.A.S., registered capital € 161 227 700, Lyon company register B 449 354 224, registered office 65, chemin du Moulin Carron, 69570 Dardilly, France. Created by ©04-2022 BOSPHORE for the design, creation and layout. Address 33, quai Arloing 69009 Lyon. Printed by ID IMPRIMERIE DECOMBAT, 25, rue Georges Charpak - Zone des Montels - 63118 Cebazat. / © 2021 Edilians. Copyright reserved. Photo credits: © Rémi Portier.



SOLAR MAX TILE

Universal solar tile that blends perfectly with all roofings

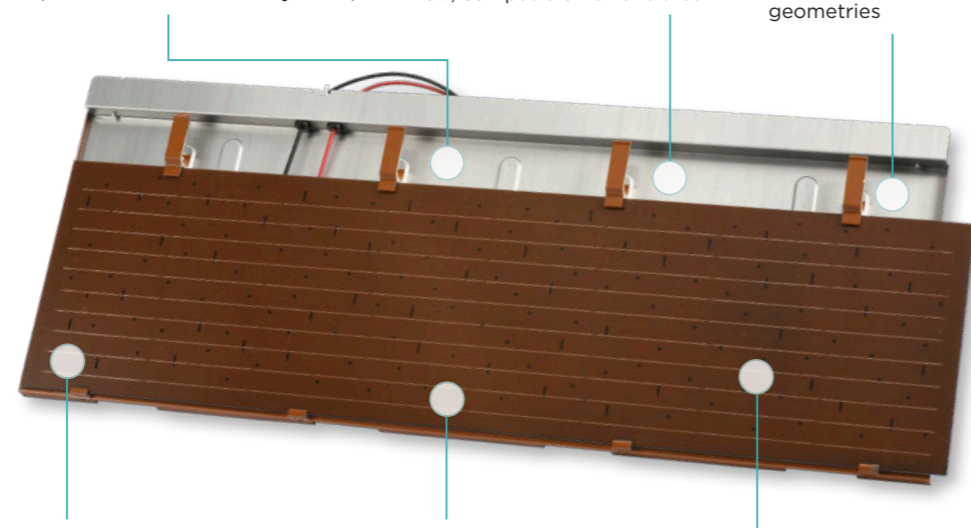
Technical specifications

- Overall length:** 500 to 830 mm
- Min. overall width:** 1350 mm
- Max. overall width:** 1690 mm
- Min. and max. working width:** 1320 to 1480 mm
- Number per m²:** ≈ 2
- Gauge variable:** 340 to 440 mm
- Unit rating:** Slate: 75 Wp
Red: 55 or 60 Wp
- Unit weight:** ≈ 7 kg
- Installation:** straight or staggered joints
- Interlocking:** single

OPTIMUM DURABILITY
Aluminium alloy support for an unequalled life cycle in roofing (anti-corrosion material, resists UV/severe weather and recyclable)

BEST WATERPROOFING ON THE MARKET!
30-year guarantee fully waterproof, when installed with new, compatible Edilians tiles

2 TILES/M²
Installation flexibility is better than that of conventional solar panels and the tiles are thus compatible with all roof geometries



TECHNICAL APPROVAL N°21/15-50
The SOLAR MAX TILE is on the green list of the Product Safety Commission (C2P) of the Construction Quality Agency (AQC), which is acknowledged by insurance companies

QUICK AND SIMPLE INSTALLATION
Simplified electrical connections in Plug&Play Modular and simple to upgrade

SAFETY AND RELIABILITY
The safest integrated solar tile on the market
Zero waterproofing or fire incidents since the tile was created in 2002

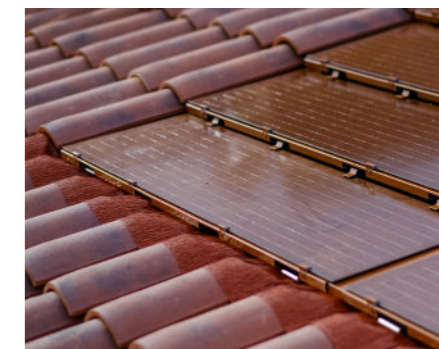


Colours available

The SOLAR MAX TILE is available in two colours: slate and red
It is integrated into the roof to the architectural identity of old or modern buildings or modern buildings



SLATE



RED



RED SOLAR MAX TILE perfect integration!
Red solar tiles blend better with red roofings, thus reflecting the local traditional appearance in our protected regional areas.

Other product

Underlay membrane
Ref. AERO 3 VOLTAIC



Electrical pack

Supply of an EDILIANS EVOLUKIT, depending on your solar installation



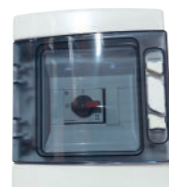
SOLENDO micro-inverter



or SMA central inverter



Cables



DC protection unit



AC protection unit
ECU generation monitor Option